

Upper Maple River



Watershed
Management Project

Upper Maple River Watershed Management Project

Public Meeting

Tuesday, June 16th

6:30 PM to 8:30 PM

Fulton Township Hall
3425 W. Cleveland Rd.
Perrinton, MI.

For more information:
Clinton Conservation District
2343 N. US-27
St. Johns, MI 48879

Phone: 989-224-3720, ext. 3
E-mail: info@clintonconservation.org
www.clintonconservation.org



Upper Maple River Watershed Management Planning Activity

A cooperative effort of local, state and federal government organizations, educational institutions, citizen/landowner groups, conservation groups, and the business community, to provide education, coordination and encourage public participation and support that will benefit the preservation and improvement of the Upper Maple River Watershed.

What are we doing?

Utilizing the information available and through the efforts of volunteers and project members, we are going out and indentifying potential hazards, pollutants, and erosion concerns that might be addressed through the development of this Watershed Management Plan. This will include alternative solutions but execution is dependant on the future availability of implementation resources. We will also identify the opportunities of restoring lost wetland areas within the watershed.

How can you help with this activity?

Get involved. Join a local conservation club or citizens group, learn more about what good conservation practices are, and help improve YOUR watershed. Get more information from the Clinton Conservation District, web site; <http://clintonconservation.org>, phone (989) 224-3720, ext. 3 or join the Friends of the Maple River; www.friendsofthemapleriver.org

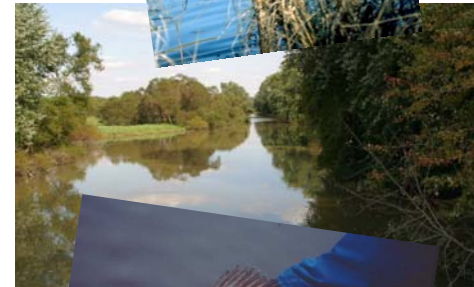
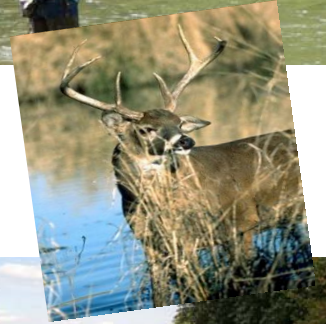
What can you do as a citizen, landowner or homeowner?

Don't pollute! Understand what's in the lawn/garden fertilizers entering our waterways. Recycle. Properly dispose of hazardous waste such as auto oil, old batteries, etc. Maintain your septic systems. Preserve, improve, or implement good buffer/filter strip practices along public waterways and drains. Maintain or improve natural vegetation on stream banks to prevent erosion.

Why is this important?

We are fortunate in Michigan to have such an abundance of natural resources. We are also fortunate to be a significant home of crop, dairy, and other farming industries. Also, we have to consider the continued expansion of urban development. We seek to find answers on how we make all these elements co-exist and yet maintain or improve the integrity of OUR watershed.

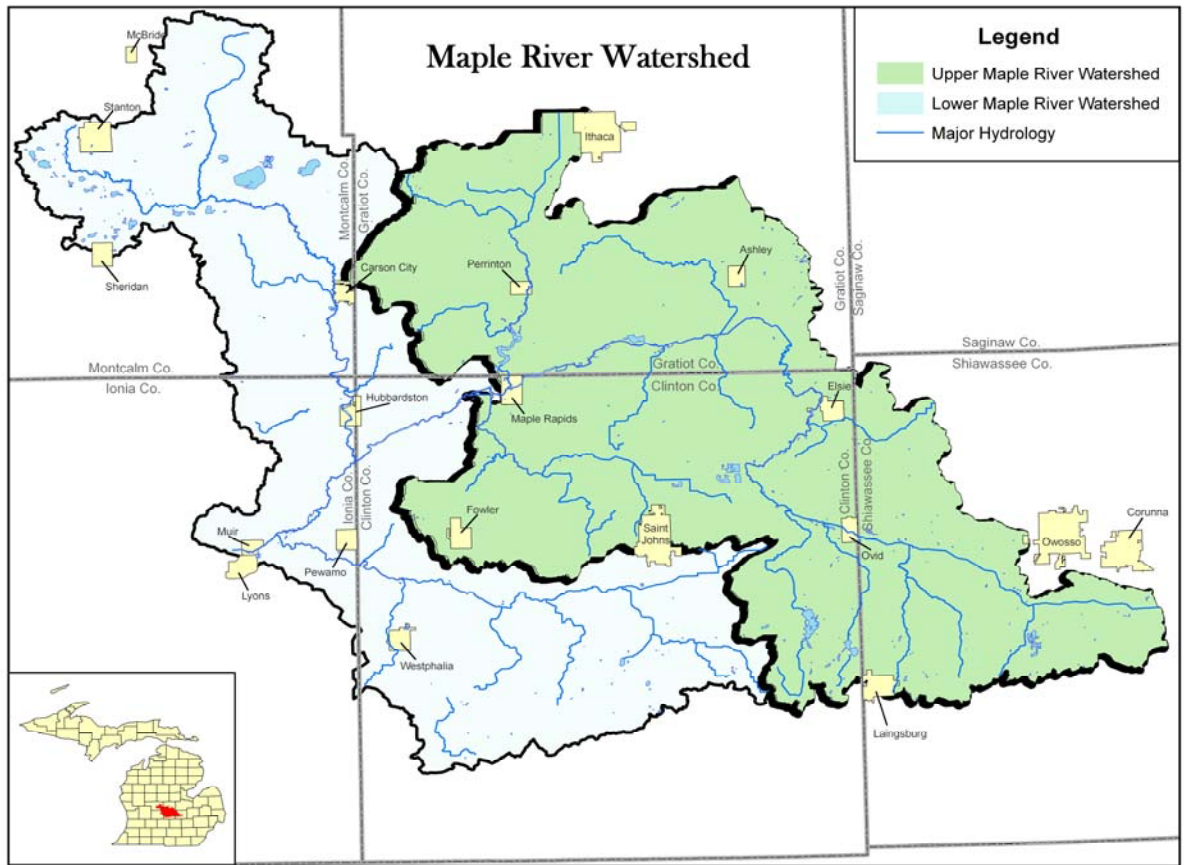
Thanks to all the participating partners; Clinton, Shiawassee and Gratiot Conservation Districts and County, Township, City and Village Governments, Friends of the Maple River, Michigan Department of Environmental Quality, Michigan State University Extension, Michigan Department of Natural Resources, Michigan Department of Agriculture, Natural Resource Conservation Services, Fishbeck, Thompson, Carr & Huber Inc., and Wetland and Coastal Resources.



Upper Maple River Watershed consists of 498 square miles. Land uses are 79% agricultural, 7% rangeland, 8% forestland, 3% urban, 2% wetlands, and 1% water.

What is a Watershed?

Next time it rains, watch the water run off your roof, your driveway, down the street. The water is on its way to the nearest stream, lake or wetland. Some of it soaks into the soil to become groundwater and slowly replenish streams and lakes. Some runs overland. Add up all the land that drains into the same waterway and you have a watershed.



This will be the second of 3 regional public meetings.

The focus of the watershed management planning project is to address non-point source pollution. Non-point source pollution occurs when a pollutant such as pathogens, nutrients, or sediment winds up in the drains, streams, and rivers at non specific points at irregular occurrences. Examples of non-point source pollution include; fertilizers on lawns that get washed into streams during rain events, soil from agricultural fields that erodes and washes into drains, and oil and salt on city streets that get washed into stormwater drains and carried into rivers.

The goal of the project is to identify what water quality problems exist in the watershed and how they can be addressed. This will be accomplished through monitoring and analysis of the watershed, reviewing various community policies and ordinances, and educating residents of the watershed about water quality concerns. As this data is compiled a Watershed Management Plan (WMP) will be developed. Once the WMP is written it will be submitted for approval from the DEQ and the Environmental Protection Agency (EPA). The next step after the WMP is approved is to apply for implementation funds. These funds will enable us to carry out the watershed improvement techniques outlined in the WMP.

The meeting content will include reporting the progress of the project and also enlist feedback from the participants through an interactive presentation. While each regional meeting will take place in one of the 3 participating counties, we urge all interested parties to attend meetings regardless of location, since the meetings content will be progressive during the course of the 2 year activity, with new materials being introduced and discussed.

Come join our efforts or at least see how we can collectively improve water quality and bring awareness to the communities, businesses, and producers in the watershed. Hopefully, together we can bring people to realize that their actions at home, work, and on the farm have impacts on the watershed.

Below is a sample of some of the interactive questions that will be asked of the audience. If you can't attend but want to participate in the questions below, just send to the Clinton Conservation District (contact info on the first page).

Do you participate in water recreation activities in the watershed? This may include hunting, fishing, canoeing, bird watching, golfing, etc.	
	Yes
	No
Over the past 10 years, do you think the water quality in the Upper Maple River watershed has...	
	Deteriorated
	Stayed the same
	Improved
	Don't know
Are you concerned about the water quality of the Upper Maple River Watershed?	
	Concerned
	Somewhat concerned
	Not Concerned
What is your greatest concern affecting water quality in the watershed?	
	Algae growth
	Bacterial contamination
	Flooding
	Loss of wetlands
	Reduced fish habitat
	Soil erosion into streams
	Storm water runoff
	Other
	I'm not concerned with water quality
What do you think contributes most of the pollution in the watershed?	
	Agricultural runoff
	Construction site runoff
	Faulty septic systems
	Household chemicals & pharmaceuticals
	Industrial discharges
	Sewage from urban areas
	Urban storm water runoff
	Other
In your opinion, what is the overall quality of the water in the Upper Maple River Watershed?	
	Good
	Fair
	Poor
	Don't know